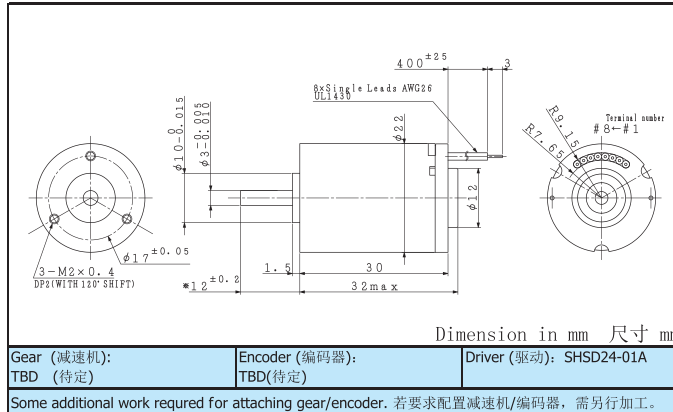
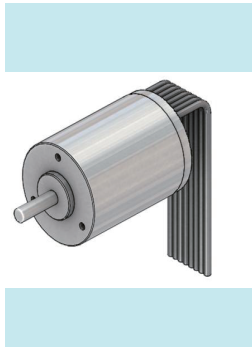


# B4S22-3212

With Hall sensors, Ball bearing 带霍尔传感器、球轴承

**NEW R&D**



Gear (减速机): TBD (待定)	Encoder (编码器): TBD(待定)	Driver (驱动): SHSD24-01A
----------------------	------------------------	-------------------------

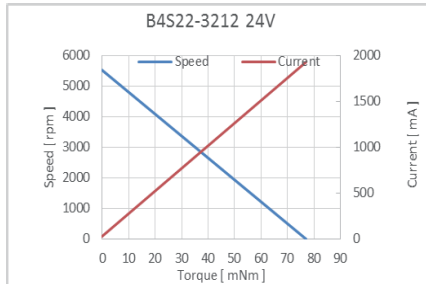
Some additional work required for attaching gear/encoder. 若要求配置减速机/编码器, 需另行加工。

Specifications	技术参数	B4S22-3212	
1 Nominal voltage	额定电压	24.0	V
2 No load speed	无负载转速	5540	rpm
3 No load current	无负载电流	34	mA
4 Stall torque	堵转扭矩	77.15	mNm
5 Stall current	堵转电流	1.93	A
6 Output power	最大输出功率	11.2	W
7 Max efficiency	最大效率	75	%
8 Terminal resistance	端子间电阻	12.42	Ω
9 Rated torque	额定扭矩	9.00	mNm
10 Rated speed	额定转速	4894	rpm
11 Rated current	额定电流	255	mA
12 Friction torque	摩擦扭矩	1.38	mNm
13 Back-EMF constant	反电动势常数	4.26	mV/rpm
14 Torque constant	扭矩常数	40.64	mNm/A
15 Slope of N-T curve	转速/扭矩斜率	72.00	rpm/mNm
16 Mechanical time constant	机械时间常数	4.00	ms
17 Rotor inertia	转子转动惯量	4.21	gcm <sup>2</sup>
18 Max torque	最大允许扭矩	22.00	mNm

Mechanical data	机械特性		
19 Shaft radial play 输出轴径向游隙	0.015	mm	
20 Shaft axial play 输出轴轴向游隙	0.23	mm	
21 Max shaft radial load 输出轴最大径向负载	6 (9 mm*)	N	
22 Max shaft axial load 输出轴最大轴向负载	1	N	
23 Max shaft axial load at standstill 静止状态下输出轴最大轴向负载	10	N	
24 Operating temperature 运行温度范围	-20 ~ 80	°C	
25 Max coil temperature 绕组最高温度	90	°C	
26 Weight 重量	72	g	

Electrical connections	接线顺序		
#1	Lw	Motor winding W 马达绕组 W	
#2	Lv	Motor winding V 马达绕组 V	
#3	Lu	Motor winding U 马达绕组 U	
#4	Gnd	GND	
#5	Vcc	Input voltage 3.0V (3~26V)	
#6	Hw	Hall sensor output W 霍尔传感器输出 W	
#7	Hv	Hall sensor output V 霍尔传感器输出 V	
#8	Hu	Hall sensor output U 霍尔传感器输出 U	

\*9mm point from motor flange (\*尺寸从马达法兰面9mm开始测量) Available only with hall sensor (只有带霍尔传感器版本)



This product is under development . Please inquire for details.  
此产品研发中, 详情请咨询。

Specifications are subject to change without notice.

规格参数如有变更, 恕不另行通知。

Adamant Namiki Precision Jewel Co., Ltd.

安达满纳米奇精密宝石有限公司

TEL: +81-3-5390-7620

TEL: +81-3-5390-7620

URL: <http://www.ad-na.com/en/>

URL: <http://www.ad-na.com/chi/>

E-mail: [motor-sales@namiki.net](mailto:motor-sales@namiki.net)

E-mail: [motor-sales@namiki.net](mailto:motor-sales@namiki.net)